



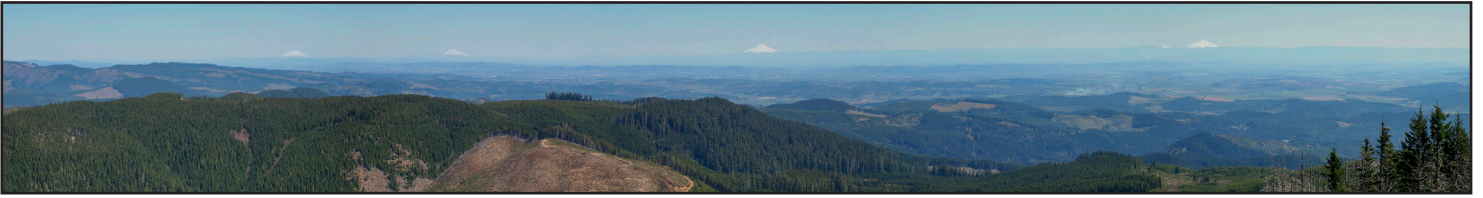
Luckiamute Watershed Council Strategic Plan



Your Land. Your Rivers. Your Community. Your Watershed

2019 - 2022

Introduction



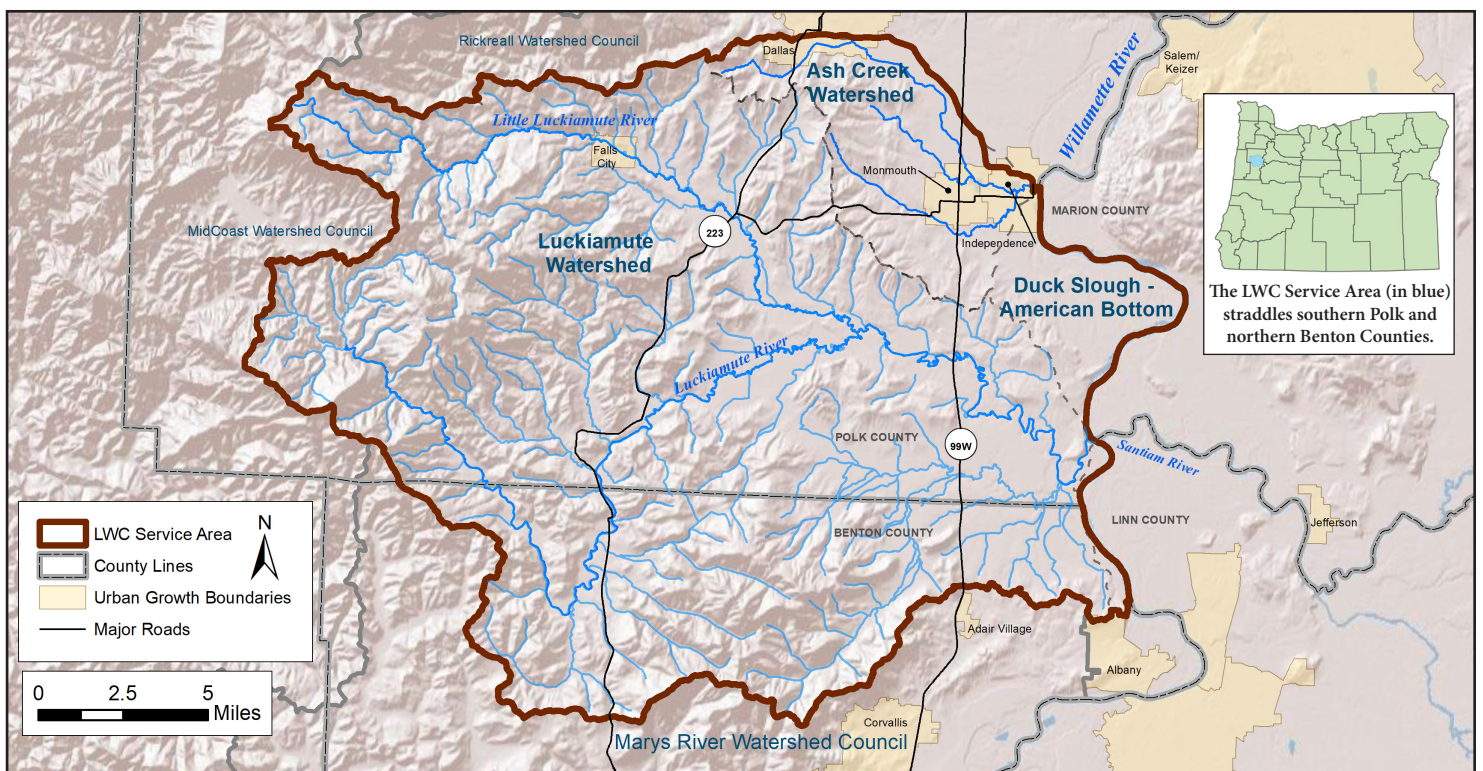
The borders of a watershed are pretty distinct when it comes to geography. Distant ridgetops define the outer edges of what can be thought of as a giant basin. Along the ridge slopes, rainfall collects in small streamlets and headwaters, draining into larger streams and tributaries before joining the main river at the basin's lowest point. Within a watershed are many plant, animal and human communities -- all of which depend on healthy waterways and intact landscapes for their livelihood and well-being. Yet our watershed community extends beyond the geophysical barriers of our watershed too. Rivers merge with other rivers, animals migrate across landscapes, seeds are deposited onto distant soils, and people travel many miles to seek new opportunities, find adventure or be with loved ones.

The Luckiamute Watershed Council is dedicated to restoring and maintaining the health of the waters and lands of our watershed. This is the core of our vision and the focus of our mission. And because the boundaries of our watershed expand to include more than what is contained by those distant ridgetops, we also promote awareness and appreciation for the interconnected nature of all our communities — plant, animal and human. Part of how we get there is laid out on these pages, which provide a summary of our latest Strategic Plan. If you would like to read the full version, you can download it at LuckiamuteLWC.org.

“We recently witnessed a group of otters frolicking in the Willamette at Independence. Later we saw a green heron stalking the shallows of the Luckiamute where shoals of small fish dappled the gravel. Life! Thank you for helping it endure.”

—Henry H., watershed resident and poet

Luckiamute Watershed Council Service Area



Strategic Plan Focus Area: Fish & Wildlife Habitat

Photo Credit: Freshwaters Illustrated



The vast network of rivers and landscapes of our watershed are home to an incredible diversity of native plants and animals. Our rivers provide important rearing and spawning habitat for resident and anadromous native fish - including steelhead trout, Chinook salmon and Pacific lamprey. The Luckiamute Watershed Council is committed to protecting and restoring habitat that benefits all of our native fish and wildlife populations. For nearly 20 years, we have:

- Worked with landowners to restore degraded riparian (streamside) ecosystems;
- Removed barriers to fish migration and improved access to spawning and rearing habitat; and
- Improved stream habitat and reconnected waterways to floodplains where appropriate.

Beginning in 2019, we will also focus on:

- Supporting beaver activity where feasible and promoting awareness of their many ecosystem benefits;
- Promoting participation in cost-share and certification programs that enhance watershed health; and
- Exploring and promoting urban and rural water conservation strategies.

Trooping along those fields as we did, up close and personal with those plants and the soil, visioning as you do what these areas will look like in 10 and 100 years, I have a much better appreciation of what “the land” truly means.

—Terry M., LWC volunteer

Strategic Plan Focus Area: Community Engagement

Whether you live, work or play within our rivers and landscapes, your actions have an impact on watershed health. The Luckiamute Watershed Council believes that working together with our local communities and partners is essential if we are to accomplish our goal of *a healthy watershed for all*. By providing opportunities to learn about watershed health and to work with each other toward protecting and restoring our rivers and landscapes, we can ensure that our watershed community continues to thrive—now and for generations to come.

Our 2019-2022 Strategic Plan outlines the following priorities to help further our community engagement goals:

- Empower community members with the knowledge and skills they need to protect watershed health;
- Provide opportunities for community members to improve or protect the watershed through donating, volunteering, or by taking personal actions;
- Encourage community members, businesses and agencies to share their knowledge with others; and
- Collaborate with businesses and organizations to achieve shared objectives and watershed benefits for all.



Strategic Plan Focus Area: Ash Creek Stormwater Collaboration



As rainfall or snowmelt moves over and through the ground, it carries with it natural and human-made pollutants and deposits them into our waterways. Unlike *point source* pollution that is released from a single, identifiable point (like an outfall pipe), this *nonpoint source* pollution can come from many different sources. Within our urban areas, stormwater runoff is one of the major non-point sources of pollution impacting the water quality of our local rivers. Flowing through the cities of Monmouth and Independence, Ash Creek is the most densely populated waterway in our service area and is the focus of our stormwater collaboration efforts.

The Luckiamute Watershed Council is committed to learning about the potential for adopting various low-impact development (LID) strategies as a stormwater management tool in the Ash Creek watershed. By collaborating with local stormwater managers, we will seek to understand their interests and concerns, and help build a basin-wide strategy to reduce the negative impacts of stormwater.

Strategic plan priorities for our stormwater management goals include:

- Forming partnerships with individuals and entities responsible for stormwater runoff control in urban areas;
- Seeking funding for convening a training for stormwater managers and developers on LID;
- Providing resources to support the education of stormwater managers and developers on LID techniques and opportunities;
- Organizing peer-to-peer information sharing; and
- Collaborating with local partners on implementing shared stormwater management goals.

About the LWC



Formed in 2001, The Luckiamute Watershed Council is a community-based 501(c)(3) organization that is dedicated to restoring and promoting the health of the Luckiamute River watershed, as well as the Ash Creek watershed and the communities of American Bottom and Duck Slough along the Willamette River.

The LWC's Board of Directors is made up of a diverse group of volunteers who work together to learn about the watershed and to improve water quality and habitat conditions along its rivers and streams. Our Board includes people with experience in fisheries, agriculture, forestry, education, and natural resource management. The LWC promotes projects that protect and enhance natural resources through the cooperation and support of local agencies, schools, landowners, industries and businesses.

Our dedicated volunteers and financial supporters are at the core of LWC's mission statement. Their generous contributions are what make projects throughout the watershed possible, and the reason we are making progress towards the goals outlined in our Strategic Plan. But our vision is still far from complete, and much work remains to be done. ***Your contributions are needed to help us achieve our goal of a healthy watershed for all!***

Consider joining our effort today and help provide a lasting legacy that future generations can benefit and enjoy. www.LuckiamuteLWC.org/Donate