

Behind the Scenes

December 2023



Dear Friend,

Just as rivers meander through the landscape, adapting to the geology and carving new paths through the land, so too do organizations undergo transitions that shape their course and propel them forward. By now you've most likely seen the announcement that Kristen Larson is leaving the LWC to pursue her passion for equitable access to a clean and healthy water supply with Business Oregon, as a Water Funding Coordinator. Her last day as LWC Executive Director is January 12.

Kristen has been an instrumental force in guiding the watershed council for the past 11 years. Her dedication, passion, and expertise have been invaluable in advancing our mission to protect and restore our watershed. Under her guidance, the LWC has made some remarkable achievements, from restoring critical ecosystems to fostering a community deeply connected to the watershed. While we are saddened to see Kristen depart, we are also incredibly grateful for her contributions and wish her the very best in her future endeavors. We are confident that she will continue to make a positive impact within the watershed as she transitions to her new position and continues to actively promote good stewardship of local rivers and lands.

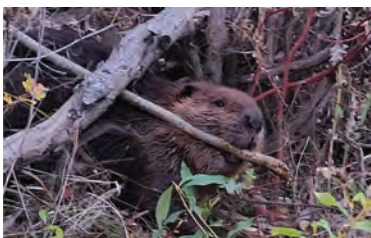
Just as a river finds its way around obstacles, adapting and thriving, so too will the LWC navigate this transition and emerge stronger and even more determined to fulfill its mission. We are committed to ensuring a smooth and seamless handover, and we are excited to unveil the next chapter in the LWC's story in the coming months.

Thank you for being a part of our journey. Your unwavering support is the driving force behind our success. Together, we will continue to nurture and protect our watershed, ensuring its vitality for generations to come!

May you and your family have a very happy holiday season, and a wonderful start to 2024!

--Suzanne Teller (Outreach@LuckiamuteLWC.org or 503-837-0237)

Upcoming Sips 'n' Science Pub Talks: Save the Date!



On February 22 from 6:30 - 8:00pm, join the LWC and George Kral, owner of Scholl's Valley Native Nursery, for an in-person Sips 'n' Science pub talk (location TBD!). During his presentation, George will delve into the intricacies of managing vegetation to effectively coexist with beavers. He highlights strategies for attracting beavers by planting specific trees and shrubs that serve as their preferred food sources. Additionally, he explores planting techniques that can discourage beaver activity in areas where their presence is undesirable. George's observations and lessons learned

over decades of practice will provide valuable insights for landowners, natural resource managers, and anyone interested in promoting sustainable coexistence between beavers and humans. By understanding beaver behavior and employing effective vegetation management strategies, we can minimize conflicts and reap the benefits of these industrious ecosystem engineers. ***You can view a recording of a past Sips 'n' Science Zoom webinar with George Kral, about how planting strategies are changing as a result of climate change at <https://www.luckiamutelwc.org/sips-and-science-plant-nurseries.html>***



Also, be on the lookout for an announcement for another early 2024 Sips 'n' Science presentation about freshwater mussels by Xerces Society Conservation Biologists Emilie Blevins and Jack Fetters!

Watershed Notes

LWC Monitoring Data Visualization Site Updated!

Thanks to the efforts of Monitoring Coordinator Jonah Nicholas, the Monitoring Data Visualization (Data Viz) website has now been updated with the most recent temperature monitoring results!

The Data Viz site is an excellent way to see the summer temperature trends at several different stream sites across the watershed, and understand how they compare with each other and how they are changing from year to year. Monitoring summer temperatures within our waterways also helps the LWC prioritize future habitat restoration projects that will provide improved habitat and cool water refuge for fish during the hottest times of the year.



If you haven't had a chance to view this site before (or haven't visited it in a long time), I encourage you to check it out at <https://data.luckiamute.net/viz>. If you need help navigating the different features and functions available on each page of the Data Viz site, you'll find several short instructional videos that are linked to from the "Tutorial Videos" tab at the top of the page.

You can learn more about the LWC Monitoring Program at <https://www.luckiamutelwc.org/monitoring.html>

Upcoming Partner Events and News

Benton Soil & Water Conservation District's Winter Plant Sale



When: Now through January 31, 2024

Pick-up Day: February 24, 2024

Pick-up Location: Benton County Fairgrounds

Every year, throughout the Fall and Winter, you have the opportunity to shop BSWCD's winter plant sale catalog, which includes hundreds of native plant species, including trees, shrubs, seedlings, bulbs, and rhizomes. Shoppers may place as many orders as they wish between October and the end of January, then pick up their orders on Pickup Day in February. Discounts are available for teachers needing plants for education projects, and for Benton County landowners working on restoration projects. Details at <https://www.bentonswcd.org/annual-winter-native-plant-sale>

Polk Soil & Water Conservation District's Winter Plant Sale



When: Pre-order starts December 7 at 3pm!

Pick-up Day: February 2 and 3, 2024

Pick-up Location: Oak Grove Road, West Salem

This winter, you will be able to select from 32 native tree and shrub species, including kinnickinnick, coyote bush, buckbrush, ceonothus, creeping snowberry, mock orange and many more! Your purchase supports native habitat in your own backyard, and all proceeds go toward oak woodland and prairie restoration at Polk SWCD properties. For more detailed information and a full list of available plants, visit <https://www.polkswcd.com/plant-sale.html>! After picking up your plant order, be

sure to check out our Native Plants Workshop & Resources webpage at [LuckiamuteLWC.org/native-plant-resources](https://www.luckiamutelwc.org/native-plant-resources)

Polk County Residents, Your Input on Natural Resource Concerns is Requested!



Do you live or manage land in Polk County? The Polk Soil and Water Conservation District and the Natural Resources Conservation Service are asking for your input on natural resource concerns in Polk County. They are seeking public input through an online questionnaire on natural resource concerns particular to Polk

County, including: forest health, soil health, water quality, air quality and wildlife habitat. Your answers will not only structure their Local Work Group meeting on January 26th, but it will also guide their work going forward. The link to the survey is <https://www.polkswcd.com/polk-co-natural-resources-questionnaire.html>