

3 Remote Sensing Project Scoping

RDG completed remote sensing using the LiDAR surface model and floodplain inundation layers to prepare an initial project scoping. Through the remote sensing effort, potential projects were described for 8 sites in the North Tract and 3 sites in the South Tract (Figure 3-1). The field investigation summarized in *4 Site Reconnaissance* included ground truthing each of the 11 potential project sites.

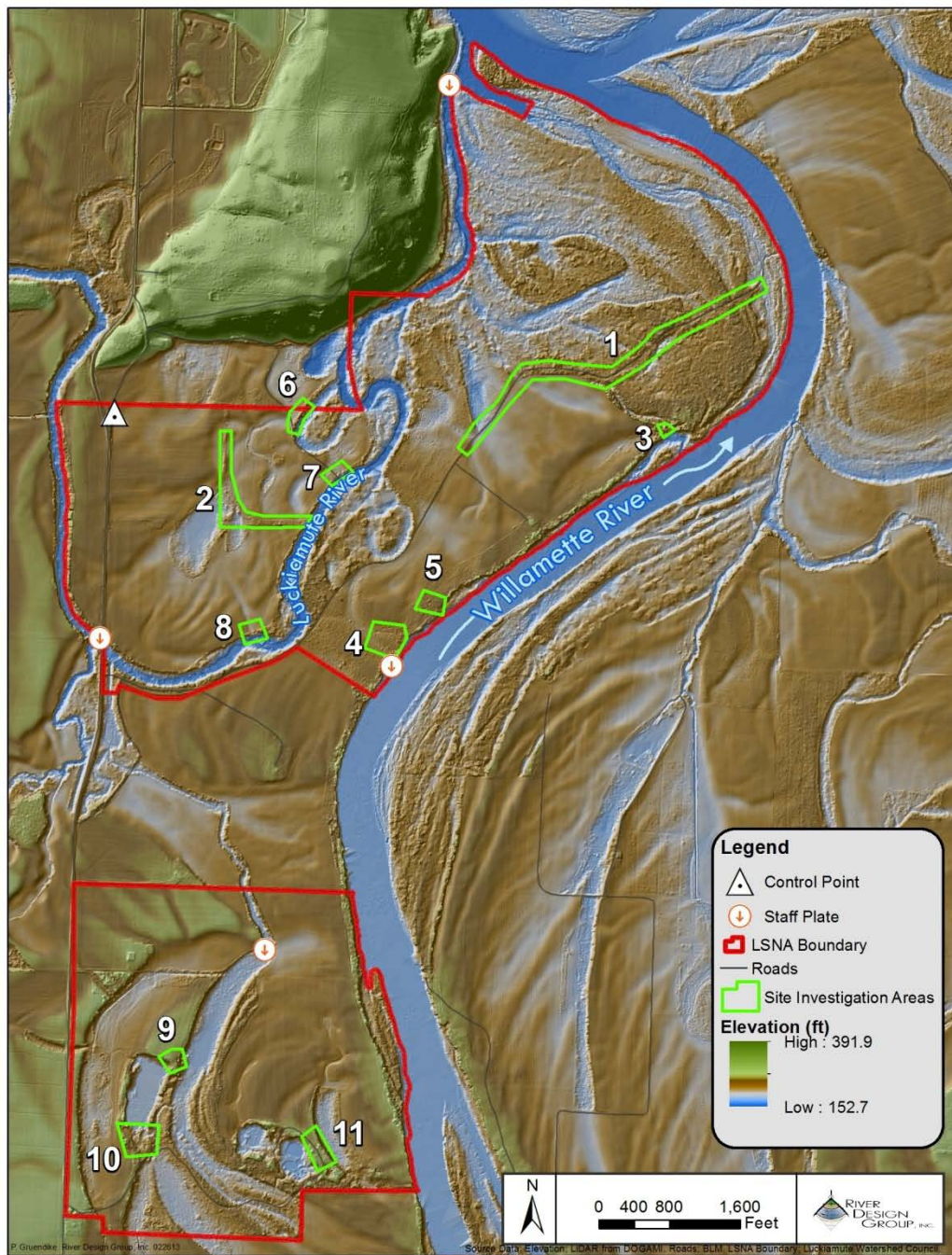


Figure 3-1. Potential project locations identified during remote sensing.